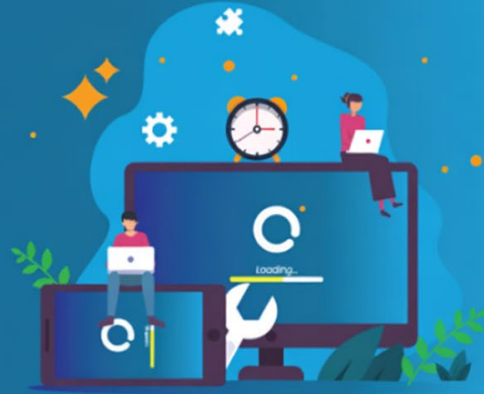


TIMS

Patch Notes



TIMS 26.1.7

Tweaks and Fixes

Charter

- Charter Allocation form providing a walkback if a depart time NULL in the back end.

Day of Operations

- Fatigue breaches detected in 26.1 at the end of the week, when there is no more work for the employee
- Despatch - VOR Vehicles Not Displaying Due Back Date
- Despatch - Incorrect Distance & Duration on Despatches

Web Driver Terminal

- Employees unable to log in using their mobiles if using Google Chrome or Samsung internet

Payroll

- Payroll Summary doesn't balance when an adjustment and standard pay in the same pay period
- QE Reporting - Add QE Flag and Employer Super Flag to paylines Export
- Payroll Summary Report was missing Bank Total

Roster

- Scratchpad was causing long delays when saving and recalculating fatigue
- Generate Roster was dropping shifts when in Replace Mode

Workshop

- Rework & optimise Fuel Economy EOM report
- Defects not appearing in the Service Calendar as priority not assigned when logged with the driver touch app